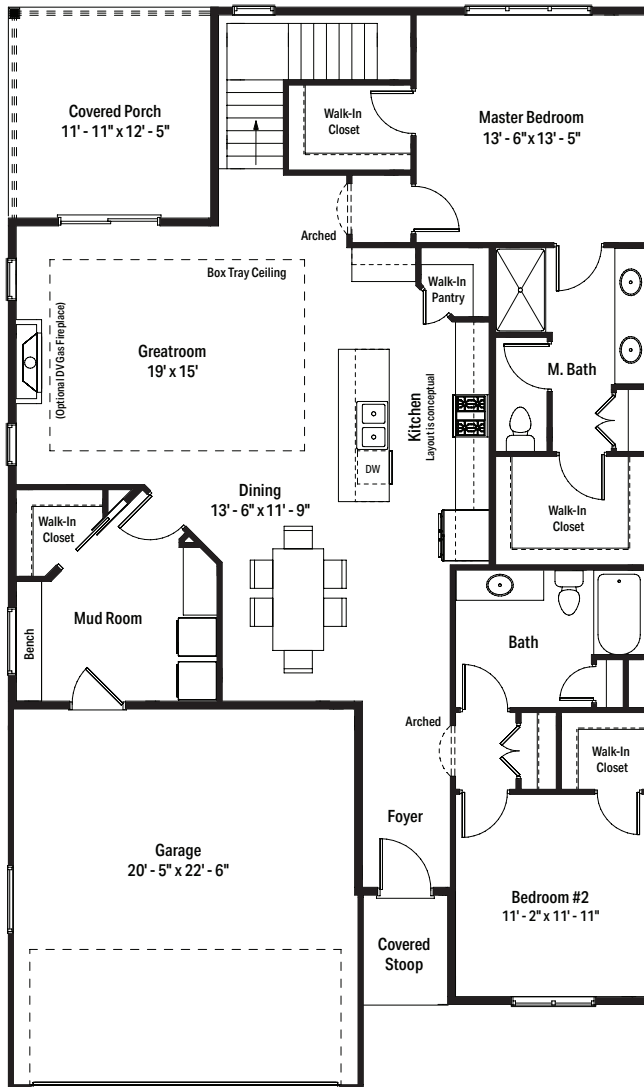


CONDO PLAN - B - LEFT



MODELS STARTING  
AT \$479,900

### CONDO PLAN B DETAILS

- 1,687 Sq. Ft.
- 700 Sq. Ft. optional basement
- 2 Bed, 2 Bath
- Covered front porch
- Main floor laundry room
- 2 car attached garage

### FEATURES OF STONEBROOK ON THE PARK CONDOMINIUMS INCLUDE

- 33 buildings with 66 units
- Zero step entry from garages
- Dramatic ceiling heights with 9'-0" walls and tray ceilings
- Full basement
- Landscape maintenance and snow removal Included
- Superior location just minutes from I-94 and shopping

### DIRECTIONS TO STONEBROOK ON THE PARK CONDOMINIUMS

From I-94 exit eastbound on Drexel Ave. Continue on Drexel Avenue 1/2 mile past Howell Avenue and turn Right on Quincy Avenue.

Floor plans may be reversed depending on site placement.  
Reversed floor plans are available upon request.



For more information contact: [nicole@janssenbruckner.com](mailto:nicole@janssenbruckner.com) • 262-403-7250

