

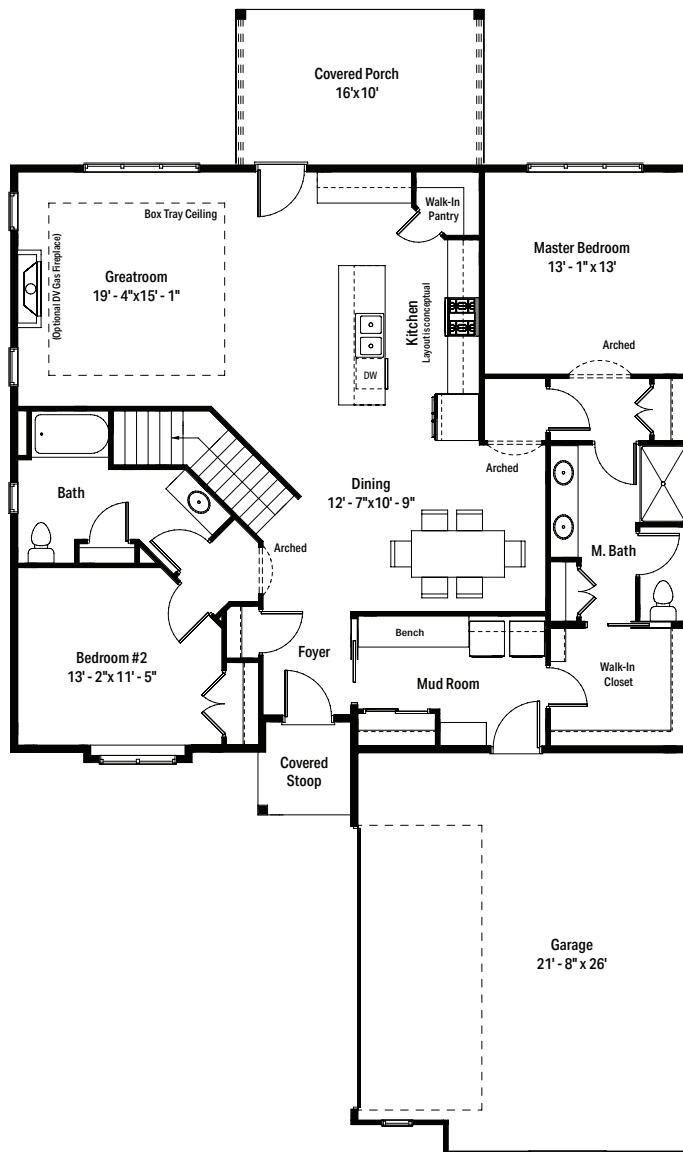
STONEBROOK
ON THE PARK
CONDOMINIUM
PROJECT
PRESENTED BY:

JANSSEN ■ BRUCKNER

BUILD ■ BROKER ■ DEVELOP



CONDO PLAN - C - LEFT



MODELS STARTING
AT \$489,900

CONDO PLAN C DETAILS

- 1,652 Sq. Ft.
- 838 Sq. Ft. optional basement
- 2 Bed, 2 Bath
- Covered rear porch
- Main floor laundry room
- 2 car attached garage

FEATURES OF STONEBROOK ON THE PARK CONDOMINIUMS INCLUDE

- 33 buildings with 66 units
- Zero step entry from garages
- Dramatic ceiling heights with 9'-0" walls and tray ceilings
- Full basement
- Landscape maintenance and snow removal Included
- Superior location just minutes from I-94 and shopping

DIRECTIONS TO STONEBROOK ON THE PARK CONDOMINIUMS

From I-94 exit eastbound on Drexel Ave. Continue on Drexel Avenue 1/2 mile past Howell Avenue and turn Right on Quincy Avenue.

Floor plans may be reversed depending on site placement.
Reversed floor plans are available upon request.



For more information contact: nicole@janssenbruckner.com • 262-403-7250



The front elevation shown above is an artist's rendering and for illustrative purposes only. All floor plans, exterior renderings and dimensions are approximate and subject to change. Standard floor plans and elevations may differ from those shown based on modifications, options and improvements. Contact salesperson for standard features. All prices and specifications, finishes, and equipment are subject to change without notice or obligation. Marketing materials in this document do not represent an actual contractual agreement.