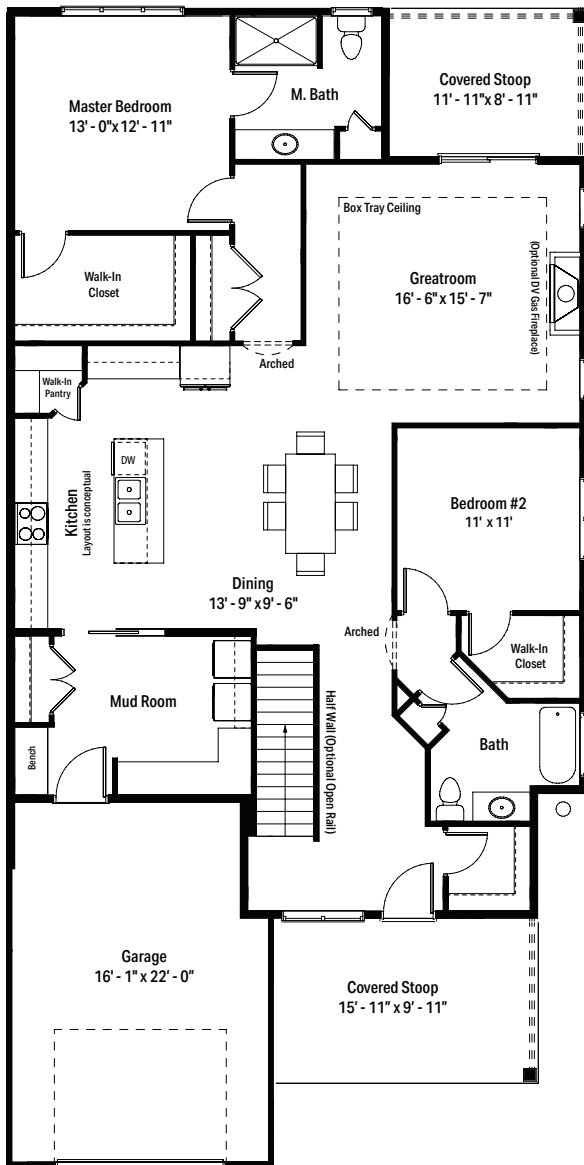




CONDO PLAN - F



MODELS STARTING  
AT \$469,900

CONDO PLAN F DETAILS

- 1,679 Sq. Ft.
- 736 Sq. Ft. optional basement
- 2 Bed, 2 Bath
- Covered front & rear stoops
- Main floor laundry room
- 1 car attached garage

FEATURES OF STONEBROOK  
ON THE PARK  
CONDOMINIUMS INCLUDE

- 33 buildings with 66 units
- Zero step entry from garages
- Dramatic ceiling heights with 9'-0" walls and tray ceilings
- Full basement
- Landscape maintenance and snow removal included
- Superior location just minutes from I-94 and shopping

DIRECTIONS TO  
STONEBROOK ON THE PARK  
CONDOMINIUMS

From I-94 exit eastbound on Drexel Ave. Continue on Drexel Avenue 1/2 mile past Howell Avenue and turn Right on Quincy Avenue.

Floor plans may be reversed depending on site placement.  
Reversed floor plans are available upon request.



For more information contact: [nicole@janssenbruckner.com](mailto:nicole@janssenbruckner.com) • 262-403-7250

