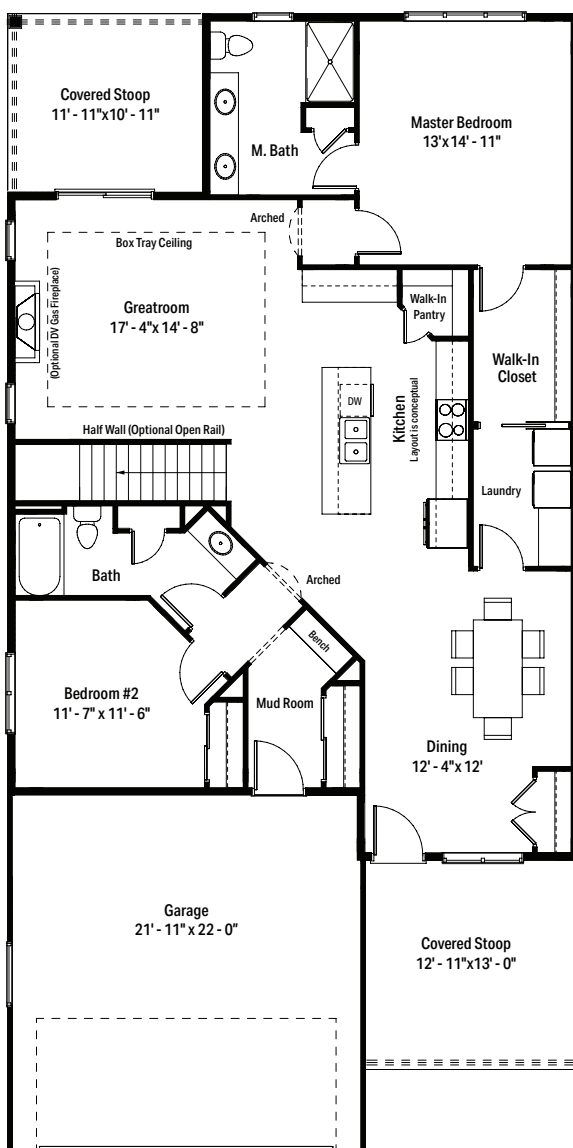




## CONDO PLAN - E



Floor plans may be reversed depending on site placement.  
Reversed floor plans are available upon request.

## CONDO PLAN E DETAILS

- 1,595 Sq. Ft.
- 873 Sq. Ft. optional basement
- 2 Bed, 2 Bath
- Covered front & rear stoops
- Main floor laundry room
- 2 car attached garage

## FEATURES OF STONEBROOK ON THE PARK CONDOMINIUMS INCLUDE

- 33 buildings with 66 units
- Zero step entry from garages
- Dramatic ceiling heights with 9'-0" walls and tray ceilings
- Full basement
- Landscape maintenance and snow removal Included
- Superior location just minutes from I-94 and shopping

## DIRECTIONS TO STONEBROOK ON THE PARK CONDOMINIUMS

From I-94 exit eastbound on Drexel Ave. Continue on Drexel Avenue 1/2 mile past Howell Avenue and turn Right on Quincy Avenue.

ASSOCIATED WITH:



For more information contact: [nicole@janssenbruckner.com](mailto:nicole@janssenbruckner.com) • 262-844-8605

